



Lady Helen Child Health Foundation (LHCHF) is a well-established Health Research and Educational organization that is keen to use her wealth of experience, expertise and skills to foster her philosophy of participatory Corporate Social Responsibility leveraging on the skills of Medical and non-medical experts in Nigeria, UK, USA and the Middle East, to provide all the expertise needed to push and contribute towards building the capacity of health practitioners and care givers in communities in order to achieve our long-standing goals of providing a balanced and quality driven health care access to children.

Reaching them One at a Time

www.ladyhelenchildfoundation.com



Who we are

The Lady Helen Child Health Foundation (LHCHF) is a Non-Governmental Organization which was set up to foster innovative concepts and ideas that are beneficial to vulnerable children.

Our Vision

To promote, advocate and facilitate the provision of quality and best practice in health care for vulnerable children.

Our Mission

To improve health outcomes for children by encouraging a culture of informed preventive medical practice and the use of best evidence for managing children's medical needs.

What We Do:

- Removing barriers to enroll in and utilize public and privately funded health care related programs and services
- Improving healthy behaviours amongst mothers and care givers towards children through health care systems
- Encourage a culture of informed preventive medical practice and the use of best evidence for paediatric practice
- Engaging stakeholders to improve policy on health care system at the executive and legislative levels
- Facilitating a range of community health support services in collaboration with partners
- Facilitate the use of LHCHF learning resources to promote best practices in the provision of care to children.

LADY HELEN CHILD HEALTH FOUNDATION

Reaching them one at a time

The Inspiration.

LHCHF was incorporated in October 2017 from private financing in memory of Lady Helen Odeka, a devoted healthcare and social worker who dedicated over 50 years of her working life to care for mothers and children in the Western part of Nigeria.

Initially, she trained as a teacher and was engaged in Christian charity work which exposed her to the plight of nursing mothers and babies. This inspired her to train as a nurse and midwife.

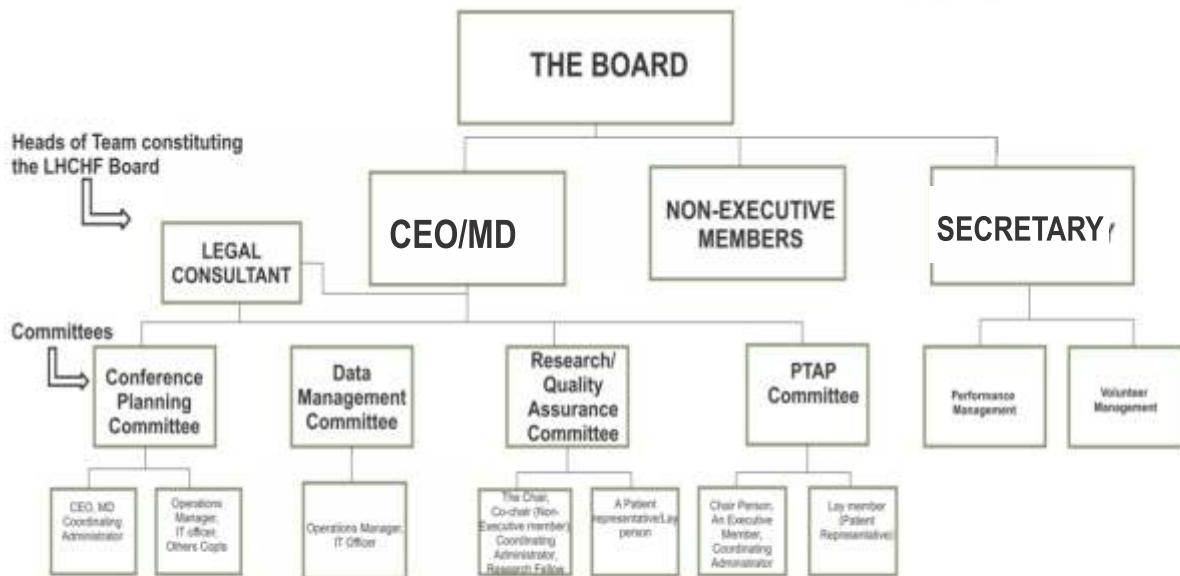
After gaining both qualifications, she embarked on a long meritorious service in the health sector of the western region of Nigeria.

She progressed to become a Sister, Nursing Administrator and an Educator. She advanced the training and quality of nursing and midwifery service in her own way in the former Western Region and later Old Bendel State of Nigeria.

The Foundation founded in her honour is geared towards improving the health outcomes for children and mothers by promoting a strong culture of preventive and quality measures in healthcare provision. This will be advanced by supporting good communication of essential health information, relevant topical research information, conducting relevant seminars in addition to the direct provision of immunization support and directing patients to suitable referral portals for consultations.

LHCHF Governance Structure is to provide effective regulation and accountability, to support the LHCHF goals and objectives. Taking these forward are a team of core professionals as Board Members.

LADY HELEN GOVERNANCE STRUCTURE



LHCHF GOALS

Support families to meet cost of treatment.

Our specific aim is to provide free medical consultation and assistance to children by offering critical, life-saving medical treatments that they desperately need through our **PTAP** Initiative.

This unique initiative assists children and infants struggling with diverse health issues and conditions with financial constraints.

Support Children to fight infections by ensuring good immunization uptake.

Protecting and boosting the immune system of children to help fight diseases and infections.

Create awareness to help improve health outcomes of children and mothers through advocacy

Use the LHCHF E-learning portal to promote research outcomes and practices in Child Health

Let's get you aware of relevant medical best practices on our E-learning platform.

Visit

www.ladyhelenchildfoundation.com/knowledge-hub

Engaging stakeholders to improve policies on health care system at all levels of governmental activities

LHCHF TRIPOD PROGRAM



The Lady Helen Child Health Foundation is a research-based humanitarian organization concerned with providing medical support and developing insights on the best measures to support and assist Children in Nigeria who have little hope of receiving medical aids. The Foundation carries out its activities through its tripod program **RAP**, by collaborating with stakeholders and partners through various activities:

- » **R**esearch
- » **A**dvocacy
- » **P**atient, **T**reatment, **A**ssistance, **P**rogramme (**PTAP**)

Research

Lady Helen Child Health Foundation (LHCHF) engages in Health related Research to provide adequate information on the basic health needs of Children. Child health research is essential for development and LHCHF research activities is focused on fostering the relevance and effectiveness of research in priority setting, and knowledge translation to action with a key role in stewardship, (promoting and advocating for relevant child health research) resource mobilization for research, the generalization, utilization and management of knowledge and capacity development.

There is a need to be more effectively engaged in all aspects of health research in order to maximize the potential benefits of research. LHCHF, moreover, plays an instrumental role in coalitions for global health research. With a renewed sense of purpose and a common goal, LHCHF intend to make strong and lasting inroads into reducing the disease burden of the Orphans and Vulnerable Children through effective research action.

Advocacy is one of the major programmes of the organization that is geared towards creating awareness that can help improve the health outcomes of children and mothers by promoting a strong culture of preventive and quality improvement measures in health care provision.

- Encouraging a culture of informed preventive medical practice and the use of best evidence for paediatric practice.
- Encouraging the Improvement of healthy behaviours amongst mothers towards children and orphanages towards orphans through systems.
- Engaging stakeholders to improve policy on health care system at all levels of governmental activities.
- Providing a range of community health and support services for children and their parents/caregivers in orphanages to give every child the best possible
- And by the use of LHCHF e-learning portal to promote best practices in child health

Our focus is on the Orphans and Vulnerable Children (OVC) and efforts are aimed at Supporting the Vulnerable in different sectors of the Community. Ensure good immunization uptake; Protecting and boosting the immune system of children to help fight diseases and infection Help to support the family with adequate information necessary to provide the best treatment for the child's condition.

Our specific aim is to provide free medical consultation and assistance to children by offering critical, life-saving medical treatments that they desperately need through our PTAP Programme. This unique idea assists children and infants struggling with diverse health issues and conditions out of financial constraints.

Patient Treatment Assistance programme (PTAP) was established by Lady Helen Child Health Foundation (LHCHF) to improve children's health. It is an initiative founded and based on the prevalent need for medical aid for Vulnerable Children. PTAP assessment is facilitated by a committee of varying experts, Doctors, Teachers, Nurses, etc.

Criteria for Accessing PTAP

1. The child must be within age of 0-18.
2. Must be in need and proven to be unable to afford the treatment being offered.
3. Must fall under UNICEF's definition of vulnerable Children.

Application is based on the following requirements

1. The Vulnerable Child is diagnosed with a specific medical condition or suffering from an ailment certified by a qualified and registered Medical Practitioner.
2. If the patient is unable to pay the hospital bills or transport costs.

How to apply

Parents or guardians of applicants are to visit LHCHF website on <https://ladyhelenchildfoundation.com/patient-treatment-assistance-programme/> Fill the PTAP application form and click the submit button.

In an emergency situation, send **YES PTAP” to 08137654501** and someone will get back to you.

- ❖ The Patient Treatment Assistance Programme (PTAP)
- ❖ The Lady Helen Child Health Foundation Annual Lecture Series
- ❖ Summit involving a wide range of experts on emerging medical issues
- ❖ Lady Helen Research and Capacity Development Initiatives
- ❖ The Market Place Outreach event for vulnerable children to provide a platform for stakeholder's engagement
- ❖ Outreach Work with Orphanages/IDP Camps (Facado Orphanage, Anawim Orphanage, Durumi IDP Camp, Mother Theresa Orphanage)
- ❖ Collaborative Partnership (Federal Ministry of Health, Ministry of Women Affairs, Ministry of Education, Ministry of Budget National Planning, Federal Capital Territory Authority)
- ❖ Collaborative partnership with Hospitals to support Child care, advocacy and practice - Nisa Premier and National Hospital, Asokoro General Hospital, Maitama District Hospital etc
- ❖ Advocacy work at executive and legislative levels to facilitate the improvement of policies and their implementation in the health system as it relates to vulnerable children
- ❖ There will be an increase in the scope of work in Lagos to reflect the established focus in Abuja in time by the engagement of policy makers and stakeholders to meet the needs of vulnerable children



LHCHF VOLUNTEERS/INTERNS

WHY WE NEED VOLUNTEERS

Lady Helen Child Health Foundation (LHCHF) is a non-profit organization that is established to provide support to the health needs of vulnerable children in Nigeria. Volunteers are needed to support the activities of the Foundation in areas of Research, Advocacy and PTAP (Patient Treatment Assistance Programme). Volunteers are to make time to be available for the activities they nominated themselves to carry out.

- Volunteers will be given training on the activities of LHCHF before commencement of any activity in the Foundation.
- There will be room for capacity building and knowledge upgrade within the period of volunteering.
- Expenses reasonably incurred while on the volunteer work for the Foundation will be reimbursed

INTERNSHIP

Lady Helen Child Health Foundation (LHCHF) as part of its corporate social responsibility (CSR) is keen on providing a platform for internship. This is to support interns who are interested in building a career within the Non-Governmental Organizations (NGO) and other related sectors.

To join LHCHF as a volunteer or Intern, kindly visit our website: www.ladyhelenchildfoundation.com for more details

BUILDING A FUTURE

Lady Helen Child Health Foundation(LHCHF) has been established and very successful over the years and working towards meeting the needs of Vulnerable Children in line with its Vision and Mission. In this regard Lady Helen Child Health Foundation has expanded its reach to other parts of the country with Lagos being the main focus of operation. Hence, LHCHF has acquired a purpose designed facility to support her activities in the Southern part of the country. The Lagos Office will provide a new opportunity for expanding its research and training base.



LHCHF Partnership meeting with the Chairman
House Committee on Health Care Services
Hon. Yusuf Sununu Tanko at the
National Assembly (2021)



LHCHF Zoom Summit on the impact of Covid-19 on Children and Family - 2020

Working with Vulnerable Children



Covid-19 Palliative to Orphanage -2020



Visit to IDP Camp, Durumi, Abuja -2018

Patient Treatment Assistance Programme - PTAP



PTAP Medical Grant at Maitama Hospital -2020



PTAP Medical Grant at Garki Hospital -2019

LHCHF Advocacy



LHCHF Partnership meeting with the Chairman House Committee on Health Care Services Hon. Yusuf Sununu Tanko at the National Assembly (2021)



LHCHF Zoom Summit on the impact of Covid-19 on Children and Family



LHCHF Seminar Series - 2019



Facing the challenges of delivering Health Care to vulnerable Children in Nigeria Lecture Speakers - 2019

Working with Orphanages



Orphanage Outreach - 2021



Orphanage Outreach - 2020



Christmas Roundtable - 2019



Christmas Packages - 2019

DIRECTORS' PROFILE



DR. BENJAMIN ODEKA

Dr Benjamin Odeka MBBS DCH MA (Healthcare Law) FRCP (L) FRCPCH Managing Director/Chief Executive and Founder of Lady Helen Child Health Foundation is a Consultant in paediatric medicine, paediatric gastroenterology and a medical educator. His practice of paediatric clinical medicine and management earned him clinical excellence award in the national health service of the United Kingdom. In his desire to provide and promote best practice in paediatrics and honour the memory of his mother Lady Helen Emiatse Odeka, he decided to self-fund this foundation to avail children in Nigeria the opportunity of receiving good and evidenced based care, irrespective of their financial standing in the society. This he believes will help to address the challenges encountered by those in need in getting consistent and good health care support. For several years, as an advocate for quality and best practice, Dr Odeka has engaged in the promotion of the quality of child health in clinical research and education. He has continued to work for the General medical council UK as a performance assessor and also work for the Care quality commission of the UK inspecting quality/standard of paediatrics provisions in hospitals in the UK (Professional and clinical advisor).



DR. FRANCISCA ODEKA

Dr. Francisca Odeka BSc (Mass Com) Msc (Mass Com.) PhD (Glasgow, UK) Social Policy is a Director and the Secretary of Lady Helen Child Health Foundation. She is also the Managing Partner of Frandek International Consulting Ltd. Dr. Francisca Odeka is a Public Sector Reform Expert especially in the area of Performance Management, Capacity Building, Quality Assurance, Policy Development and Implementation, Monitoring and Evaluation. These are skills and expertise that she brings to bear in her role as one of the Directors of Lady Helen Child Health Foundation. Over the years she has worked in collaboration with the Primary Health Care to develop Capacity Building Programs including Performance Management Tools to support the Sector in its effort to ensure that its employees are working to its optimum. Dr. Odeka is a top management coach; she has attended courses in business management and women entrepreneurship in Harvard Business School. Other areas of expertise are in the area of Human Resource Management, Strategic Leadership, Risk Management and Public Protection.

DIRECTORS' PROFILE



**Mrs Ufuoma Claire
Odeka - Howell**

Mrs Ufuoma Claire Odeka – Howell M.Pharm is a trained pharmacist with a masters degree. A member of the pharmaceutical council UK is one of the directors with a very strong ethos for social engagement and humanitarian work. She is a manager under the Tesco pharmacy retail chain in Manchester UK and previously worked as a Pharmacy retail manager at Boots the chemist UK. She is involved in charity work and a trained sign language teacher.

BOARD OF TRUSTEES



Dr. Benjamin Odeka
MD/CEO



Dr Francisca Odeka
Secretary



Mrs Ufuoma Claire Odeka-Howell
Director



Mrs. Laditan Bolatito Arinola
Non Executive Member



Justice Gladys Kpenikpe Olotu
Non Executive Member



Mr. Christopher Osarumwense
Non Executive Member

AMBASSADORS



**Dr Ms Bibian
Nwanyioma Ofoegbu**

Consultant Neonatologist – (UAE)
Clinical Risk Lead (Neonatology) – (UAE)
Ambassador, Lady Helen Child Health Foundation

Dr Ofoegbu is the Clinical Chief of Neonatology at the Corniche Hospital, which houses the largest NICU in the United Arab Emirate. She is an MRCPCH (UK) Part 2 Clinical Examiner, an avid teacher, trainer and an educator.



Dr. Yemi Oluwole

Consultant Paediatrician (UK)
Lead and College Tutor Rochdale/Oldham
Ambassador, Lady Helen Child Health Foundation

Dr. Oluwole has many years of NHS practice as a Consultant in Paediatric Practice. She contributes to the education of Doctors in Training.



Dr. Mrs. Hart-Uta

Dr. Mrs. Hart-Uta is a passionate mother of all FCT Children, a seasoned Social Worker and a Philanthropist par Excellence. She was employed into the Service of FCTA as Social Welfare Officer II and rose to the peak of her career in the Civil Service as a Director, Gender Department, FCTA.

Mrs. Hart-Uta is a lover of children and the vulnerable she has touched the lives of so many Children in Orphanage homes within and outside the FCT. She rendered a meritorious service to humanity in general and to FCTA in particular.

- Ambassador of Peace
- Award of Recognition for the Enormous Contribution to the Needs of Families and Families in Dispute in FCT and Supporting the Peace Campaign of Youth Initiative for Diversity in Nigeria.
- A meritorious Award of Fellow of Social Work Administration (FSWA)
- Recognition Award for Efforts Towards Ending Violence Against Women
- Honorary Doctorate Degree by the Institute of Public Administration.



LHCHF Volunteers Group Photograph
during Induction Training in Lagos
Office – March 2021



Cross Section of LHCHF Volunteers during
Induction Training in Lagos
Office – March 2021



Cross Section of Volunteers during
LHCHF Induction Training in Abuja
Office – May 2021



Cross Section of LHCHF Volunteers
during Induction Training in Abuja
Office – May 2021



LHCHF focus on building partnerships with Ministries, Hospitals and NGOs to improve Health Outcomes for Children. We shall leverage on these Networks through Facilitation, Grants and Research to provide adequate information on the Basic and Health needs of the Children.



Have Questions or Need Support,
Please Email us on Info@ladyhelenchildfoundation.com
For prompt response, please contact us through our

Abuja Office Address: Suite 9, B Wing, Second floor, City Plaza,
Area 11 Abuja-FCT

Lagos Office Address: 42 Lateef Aregbe Street Ojo Palace Way,
Okota Isolo, Lagos State.

Phone: +2348137654501, +2349138666863, +2348133884237
+44958297237



Our focus is on the health needs of Vulnerable
Children and Research for a more
Effective Healthcare delivery in Communities.

www.ladyhelenchildfoundation.com

Twitter:

www.twitter.com/ladyhelenchf

Facebook:

www.facebook.com/ladyhelenchf

Instagram:

www.instagram.com/ladyhelenchf01

LinkedIn:

Lady Helen Child Health Foundation

Abuja Office: Suite 9, B Wing, 2nd floor,
City Plaza. Area 11 Abuja-FCT, Nigeria

Tel: +2348137654501,

Lagos Office: 42 Lateef Aregbe Street
Off Ago Palace Way, Okota Isolo, Lagos State.

Tel: +2349138666863